



Breaking new ground

LAMMA

One way to brighten up the dreary month of January, as it turns out, is to be surrounded by endless amounts of shiny new machinery, something LAMMA 24 had in abundance. CPM reports on some of the latest launches and UK debuts from the show.

By Melanie Jenkins

Anyone who attended LAMMA on 16 or 17 January is likely to have observed just how popular the show was this year. With record numbers reported to have attended, even the vast halls of the NEC in Birmingham became crowded, much to the delight of the manufacturers and hosts alike.

And it's no surprise how many people piled in based on the number of machines making a UK debut and exhibitors returning after a few years of absence, including Massey Ferguson and JCB.

Massey Ferguson

Launched at Agritechnica in November, Massey Ferguson's 9S had its UK launch at LAMMA. The MF 9S tractor includes key features such as an updated six-cylinder, 8.4-litre AGCO Power engine, the Protec-U cab design, Dyna-VT transmission and tyre inflation system. Coming in six models with power from 285-425hp, controls have been enhanced with the new MF AutoTurn, AutoHeadland and ISOBUS Tractor Implement Management options.

Engine Power Management (EPM) boosts torque up to 1750Nm and generates up to 30hp of extra power at speeds above 15km/h for PTO and hydraulic applications on all models (except the MF 9S.425).

It features a 10% larger, 660-litre fuel tank as well as a 68-litre AdBlue tank. The engine is also designed to run on HVO fuel, to provide more sustainable operations.

JCB

Returning to LAMMA, JCB's stand was a dominating force, drawing in crowds with its versatile range of equipment, including its Fastrac, loaders and telehandlers.

New from the firm was the 542-100 AGRI Pro telehandler, with a 4.2t maximum lift capacity, 9.8m maximum lift height, a 173hp engine and a travel speed of 50km/h; and the 560-80 AGRI Pro, which has a 173hp engine, travel speeds of 40km/h, a maximum lift height of 7.9m and

a maximum lift capacity of 6t.

Both new machines come with JCB's AGRI Pro package, now available across the Loadall range, combining a 129kW (173hp) engine with the DualTech VT transmission, providing the 'best of both worlds' hydrostatic and powershift drive.

The all-new JCB Loadall 542-100 will complement JCB's current high-lift telehandler — the 536-95 — with a half-tonne, (or more than 16%) increase in maximum lift capacity of 4.2t.

Built with new chassis and boom designs enabling a number of performance and productivity enhancing features to be introduced, it will also lift heavier loads throughout the boom envelope and to the 9.8m maximum lift height.

In the highest-specification AGRI Pro form, the Loadall 542-100 will be significantly more powerful thanks to its 129kW (173hp) engine, and also faster, with JCB's unique 50kph DualTech VT transmission installed, designed to allow large farms and straw contractors to work more efficiently and more productively.

With its 129kW (173hp) JCB DieselMAX engine, the Loadall 560-80 AGRI Pro will become the most powerful and best equipped 6t capacity telehandler in the Loadall range.

The 560-80 is currently available to AGRI Super 97kW (130hp) specification with a four-speed JCB Powershift transmission and 160-litre/min hydraulics,

and in Agri Xtra form with 112kW (150hp) and JCB's unique DualTech-VT hydro/powershift transmission.

The new AGRI Pro version will have a 40km/h version of this transmission and 160-litre/min hydraulics — plus 15% more power and 15% more peak torque at 690Nm from the 4.8-litre JCB engine.

In addition, JCB's £100M project to produce hydrogen engines took centre stage at the show.

A team of 150 engineers is working on the pioneering initiative to develop hydrogen combustion engines — and more than 75 prototypes have already been manufactured at JCB's UK engine plant.

Visitors to the show saw the wraps come off the brand-new JCB hydrogen combustion engine — the company's zero-carbon emissions solution for agricultural and construction equipment.

Prototype JCB hydrogen engines are already powering Loadall telescopic handler and backhoe loader machines. JCB has also made a breakthrough in proving the wider appeal of hydrogen combustion technology by installing hydrogen engines into a 7.5t Mercedes truck and a Mercedes Sprinter van.



Launched at Agritechnica in November, Massey Ferguson's 9S tractor had its UK launch at LAMMA.

Bednar

Another first for LAMMA 2024 is the Bednar DIRECTO NO 6000. The drill is specifically designed for direct seeding of various crops into uncultivated soil, stubble fields, catch crops or heavy and rocky soils. Equipped with a 5000-litre

double chamber pressurised hopper, if combined with the optional Alfa drill 400 seeding unit, the drill can plant up to three types of seed in one pass. Fertiliser can also be applied during seeding with unique fertiliser discs.

Seeding coulters are set in two rows ▶

Here's an idea 
A sprayer so advanced it uses up to 80% less agrochemicals



When it comes to chemical saving, AMAZONE's unique AmaSelect nozzle control ticks all the boxes.

The electric, four-way nozzle body can select up to 7 different combinations of nozzle on the move – controlling droplet size and minimising drift.

Around bends, CurveControl gives you even dose rates across the full boom width and the individual nozzle switching means less wastage.

Band spraying with AmaSelect Row can further cut chemical usage by up to 65% but, to top it all, spot-spraying to a predetermined weed map using AmaSelect Spot can save you up to 80% of active ingredient use. More clever thinking from AMAZONE.



Add a little dose from the NEW DirectInject system and those savings go up yet another notch.



**IDEAS FOR
OUR FUTURE**





Supporting British Manufacturing

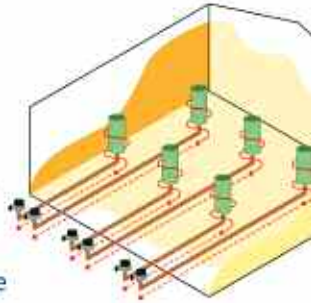
Planning a grain store? Talk to the experts

UNDERFLOW



Pedestal cooling for underfloor ventilated stores

- Perfect for new build stores
- Suits overhead conveyor filling
- Easy to position and move fans outside
- Pedestals more secure when filling
- Warm air expelled out of store



Available in
POLYCOOL
and
METALCOOL

WARWICKSHIRE:
5000 tonne
wheat store

OXFORDSHIRE:
500 tonne
mixed crop store

WILTSHIRE:
1000 tonne
wheat & spring
barley store



LV Fans connect directly to 450mm duct through external wall to cool stored crops

Polycool Laterals Floor based ventilation systems

CAMBRIDGE:
Part of a 100,000 tonne
commercial
storage operation

YORKSHIRE:
10,000 tonnes
of wheat for animal feed

ROMANIA:
10,000 tonnes of
grain maize

LV Fan Range for high efficiency grain ventilation

Available in a variety of sizes according to application:

- LV500: 2.2kw
- LV1000: 4kw
- LV1800: 11kw

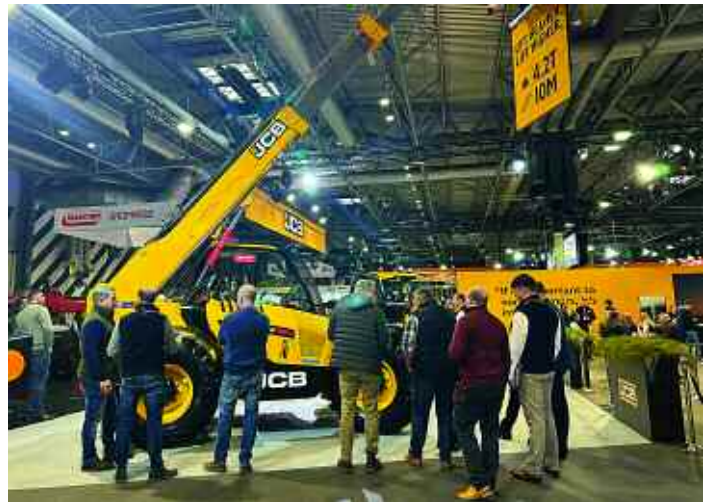
- Highly efficient impeller
- Designed to ventilate under floor channels, ducts or Polycool Laterals



ROMANIA:
Grain maize

YORKSHIRE:
Animal feed

CORNWALL:
Miscanthus



Returning to LAMMA, JCB's stand was a dominating force, drawing in crowds with its versatile range of equipment, including its Fastrac, loaders and telehandlers.

▶ with an inter-row distance of 16.7cm, with a minimum sowing depth of 2cm and have a down pressure of 250kg each.

improved engine power and an 11% larger fuel tank.

Case IH

CPM first saw Case IH's new Quadtrac 715 AFS Connect in Austria last year, and it cut no less of an impressive figure at LAMMA where it made its UK debut. A dominant presence on the stand, the 715 is Case IH's most powerful production tractor, and is also the most powerful tracked tractor in the industry, featuring an upgraded cab, longer heavy-duty tracks and more fuel capacity.

The machine has a FPT Cursor 16 engine, which delivers up to 778hp at maximum power. Together with increased torque (+6%),

Ecorobotix

The Ara Ultra-High Precision Smart Sprayer by Ecorobotix brought its UHP-Spray-Technology and AI-driven Plant-by-Plant software to LAMMA for visitors to see. Unlike any sprayer most are likely to have seen before, the system, which looks like three rear-mounted ground-trailing boxes, is able to scan fields swiftly, targets specific crops or weeds and delivers a precise 6x6cm spray while minimising drift.

Initially focusing on herbicides in vegetable fields, it boasts boosted yields, aims to slash chemicals by up to 95% and reduces manual labour.



New Holland's new flagship combine the CR11, features a 775hp C16 engine, two 61cm rotors, a 20,000-litre grain tank and a 210litre/sec unload rate.

Ecorobotic, a Swiss B Corp wants to transform agriculture by minimising chemical usage and preserving biodiversity.

Grange Machinery

Grange Machinery returned to LAMMA with new updates to its Strip-Till Preparator, including a new 6m version. The machine has been designed for farmers wanting to accurately establish maize, oilseed rape and sugar beet. It has three independent rows of cultivated discs that are hydraulically adjusted while working with the firm's LD tine and point to help create the ideal cultivated row.

The updated machine had wider working widths and can now be specified with 0.45m, 0.5m, 0.75m or 0.8m row spacings, with either shear bolt or hydraulic auto reset leg protection. Other options include the application of granular or liquid fertiliser down the low disturbance tine.

Knight Farm Machinery

New from Knight was its 24 series self-propelled sprayers. Launched at LAMMA, the series includes four models with 3500-6000-litre capacities, 175-300hp six-cylinder Perkins engines and new

MAXimizer Pro circulation systems. In addition, these come with upgraded software for boom height, hillside correction, air suspension, steering, and diagnostics.

In addition, active rinse is now optional on all Knight sprayers. The company's Active Rinse system automates clean water management to eliminate spray solution where it's not required and actively cleans the plumbing when not in use. The technology ensures lines are always left clean when not spraying, minimising product leakage and waste, and the chance of cross contamination.

Models across the Knight's mounted, trailed and self-propelled sprayer ranges are also now available with MAXimizer PRO fluid control, which enables the sprayer's low volume plumbing to be primed before spraying begins for full circulation, automatic agitation and instant nozzle response/switching. The system also means clean water line purging is similarly instant.

Kubota

Kubota has expanded into the materials handling sector with the launch of its first compact telehandler. The KTH4815-2



Another first for LAMMA 2024 is the Bednar DIRECTO NO 6000 which has been specifically designed for direct seeding of various crops.

compact machine boasts an overall width of 1.6m and a height of below 2m, a maximum lift height of 4.8m and a maximum lift capacity of 1.5t, depending on the variant. Hose burst check-valves and a load-moment sensor with forward over-turn protection meeting EN15000 certification, are also part of the standard specification.

Four versions of the KTH4815-2 telehandler are available; two are canopy-equipped models with a curved front screen, and two use fully glazed ▶

TECHNEAT MULTICAST

A seeder that applies numerous products and suits a wide variety of implements.

- ▶ 25 years experience
- ▶ Applies all small seeds, Avadex granules, cover crops and slug pellets
- ▶ Powerful hydraulic fan
- ▶ Garmin GPS control system
- ▶ 200l or 400l hopper
- ▶ Configure the spec to suit your needs
- ▶ 12m/15m boom available
- ▶ Dual hopper option
- ▶ Excellent service and spares support

MULTICAST

MULTI USE AIR SEEDER

Email: info@techneat.co.uk
Tel: 01353 862 044
www.techneat.co.uk

VIEW OUR WEBSITE



Valtra's new flagship sixth generation S Series - dubbed 'The Boss' by the firm - is its most powerful tractor, featuring an 8.1-litre AGCO Power engine.



Kubota has expanded into materials handling sector with the launch of its first compact telehandler, the KTH4815-2.

► cabs with a two-piece door — the glazed upper section can be secured in the open position. The entry-level KTH4815-2 is supplied without a 170kg rear counterweight and is shod on 10/75x15.3 narrow tyres, reducing both its cost and performance. A wider, 31/15.5-15 skid steer tyre option is available.

Merlo

Merlo showcased two new compact telehandlers at the show, including the Turbofarmer 30.7 and the 27.6.

The Turbofarmer 30.7 is specially designed to meet the demands of those working in confined spaces such as a traditional farm setting. Measuring at just 2m wide and 2.10m high, the TF30.7 can be lowered further still to 1.9m with the low cab option.

The TF27.6 has a lift capacity of 2.7 tonnes with a 6m reach and measures 2.2m tall and 1.9m wide. Equipped with a

new triggerless capacitive multifunction ergonomic joystick, these new models can also be fitted as option with Merlo's Adaptive Stability Control System (ASCS) which offers an in-cab LCD display with attachment recognition and weighing system.

New Holland

New Holland's new flagship combine, the CR11 made its UK debut at LAMMA having scooped several awards at Agritechnica 2023 where it was previewed. As the brand's highest capacity combine yet, the CR11 offers the top levels of productivity, at the lowest grain crackage as well as delivering greater throughputs, grain loss reduction, and more automation.

The CR11 features a 775hp C16 engine, two 61cm rotors, a 20,000-litre grain tank and a 210-litre/sec unload rate. The new Twin Clean cleaning shoe comes with two cleaning systems behind each other, with two upper sieves, two lower sieves, two clean grain augers and two sets of pressure sensors to measure cleaning shoe load.

Standen

Standen showcased a range of machinery, including its SR200 Planter as well as specialist machinery from Ferrari and MOM at the show.

The Standen SR200 planter, an easy to set-up, two row cup potato planter includes a new cup design that's capable of handling longer and larger seed.

The Standen planter offers a high work rate, achieving fast forward speeds of up to 10km/h. The updated in-cab touch screen controls operate the hydraulic space selector to give high levels of control over seed spacing and ensure accurate planting. The new stainless steel hood design with automatic hydraulic pressure adjustment is designed to form ideal ridges even at high forward speeds.

From Ferrari Growtech the firm's stand included the Futura Automatic Planter and the Remoweed Inter-row and plant hoe.

The Futura Planter can work with vegetables stored in trays of different sizes and materials and only requires one operator to feed the transplanter robots with trays. The machine can be adapted to the tray selected by the user so there's no requirement to use a specific tray to run FUTURA.

Ferrari Remoweed can remove weeds both between the rows and between the plants on the same row. The machine can scan and remove the weeds found

along the width of its frame while moving forward and this can be completed in one single pass, reducing labour costs and chemical usage.

New to the Standen Imports business was a MOM Strip Hawk Telescopic Strip-Till with liquid kit and separate unit. Strip Hawk Strip-Till concentrates the ploughing, weeding, fertilisation and harrowing operations in a single pass. The soil between the strips isn't worked and remains covered by crop residue helping to benefit soil structure.

Valtra

It turns out that Valtra has tapped into the magpie inside everyone judging by the plethora of shiny and colourful plumage on display at its LAMMA stand with the crowds craning for a better view.

But it's not just a bright exterior that the firm brought with it, also on display was its new flagship sixth generation S Series. Designed and made in Finland this machine has been dubbed 'The Boss' by the firm. Valtra's most powerful tractor, it's been designed for those demanding responsive torque, efficiency, reliability and low total cost of ownership. The new S Series comes with all the smart farming features for enhanced autonomy and increased profitability.

The S Series features an 8.1-litre AGCO Power engine and a continuously variable ML260 transmission, with the largest model, the S416 providing up to 420hp and 1750Nm of torque, while the S286 offers 280hp and 1250Nm of torque. ■



Both JCB and Kubota showcased their new hydrogen engines at this year's LAMMA as the industry continues to explore alternative fuels.